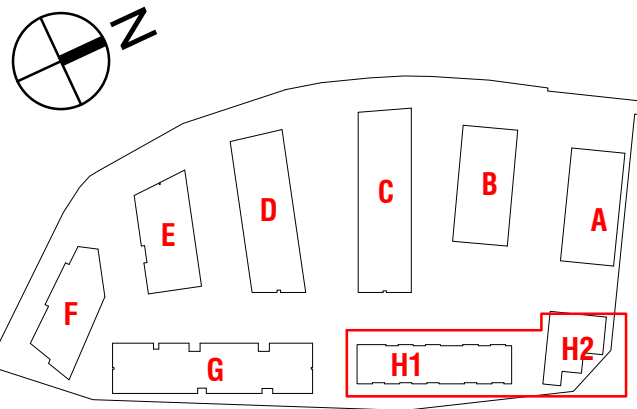


Orientation

Key Plan



- LEGEND**
- LOBBY/CORRIDOR
  - DUPLEX
  - 1 BED TYPICAL RESI
  - 2 BED TYPICAL RESI
  - 2 BED RETIREMENT
  - 3 BED RETIREMENT
  - 2 BED PENTHOUSE
  - 3 BED PENTHOUSE
  - 2 BED AFFORDABLE HOUSING
  - 1 BED AFFORDABLE HOUSING

P03	04.02.22	Amendments to planning drawings issued on 26.03.21	SM	AR
P02	26.03.21	Amendments to planning drawings issued on 05.04.19	SS	AR
P01	05.04.19	Updated information for planning issued on 28.05.18	SM	AR

Rev.	Date	Revision	By	Checked
------	------	----------	----	---------

**leonard** design architects  
4th floor, Albion House  
5-13 Canal Street  
Nottingham, NG1 7EG, United Kingdom  
t. +44 (0) 115 945 0080  
e. office@leonarddesignarchitects.com

**Client**  
**Reuben & Morgan Ltd.**

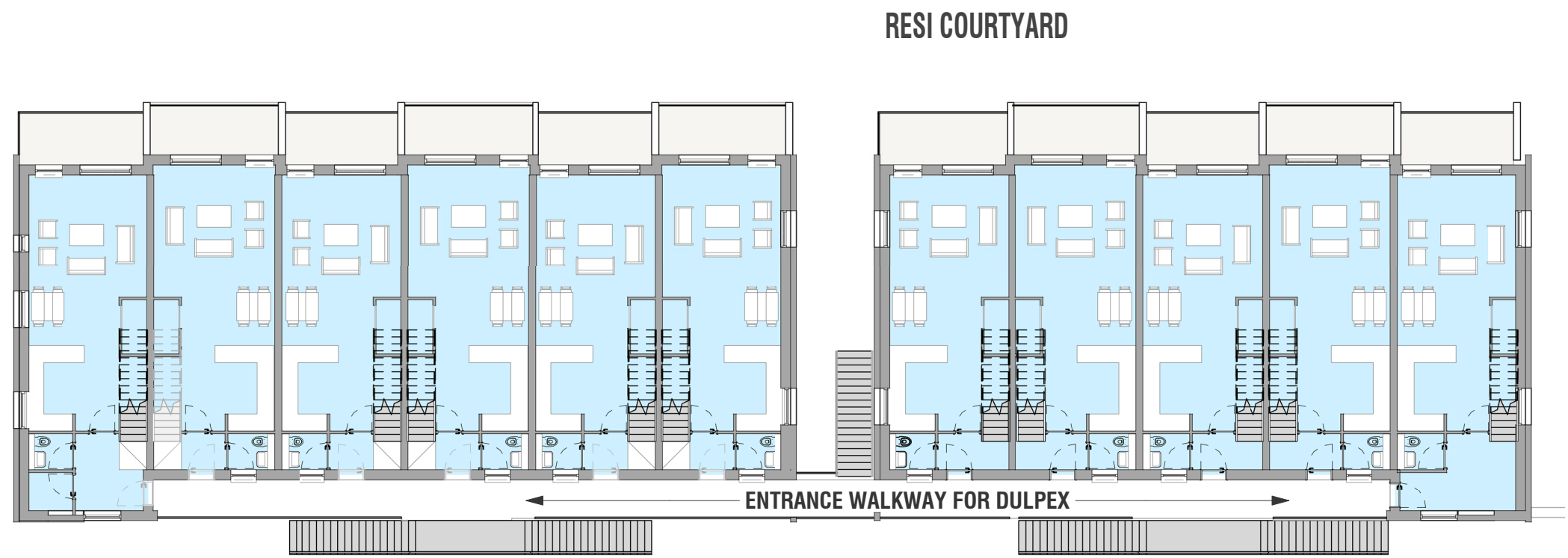
**Project**  
**West Quay Road, Poole**

**Drawing Title**  
**Block H Floor Plans**

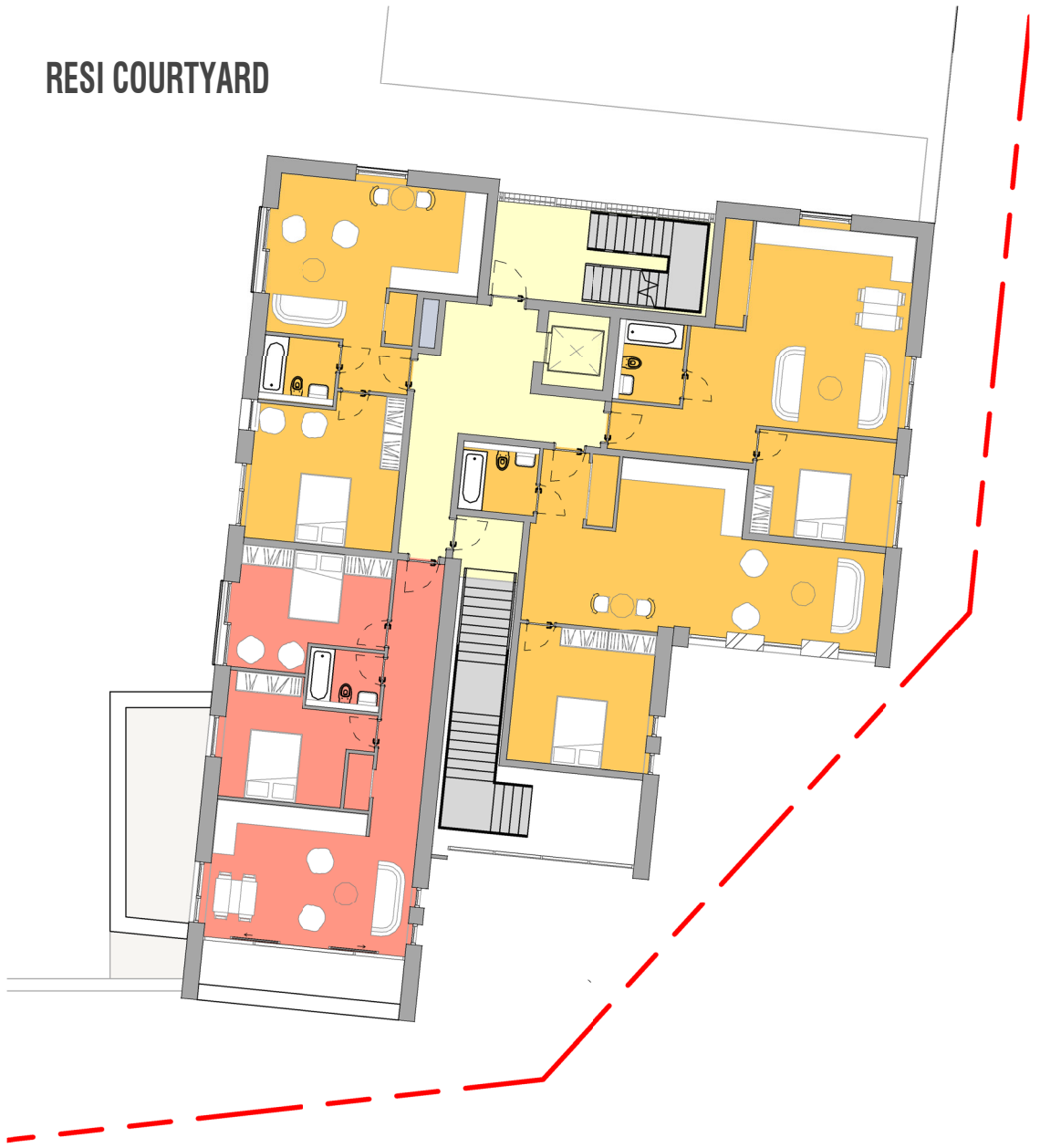
<b>Project Number</b> 0625	<b>Suitability</b> S4
<b>Drawn by</b> SS	<b>Checked by</b> SM
<b>Scale @A1</b> As indicated	<b>Date</b> 05.04.19
<b>File Identifier</b> 0625 - LDA - ZZ - ZZ - DR - A - 08037	<b>Revision</b> <b>P03</b>

**Purpose of Issue**  
**PLANNING**

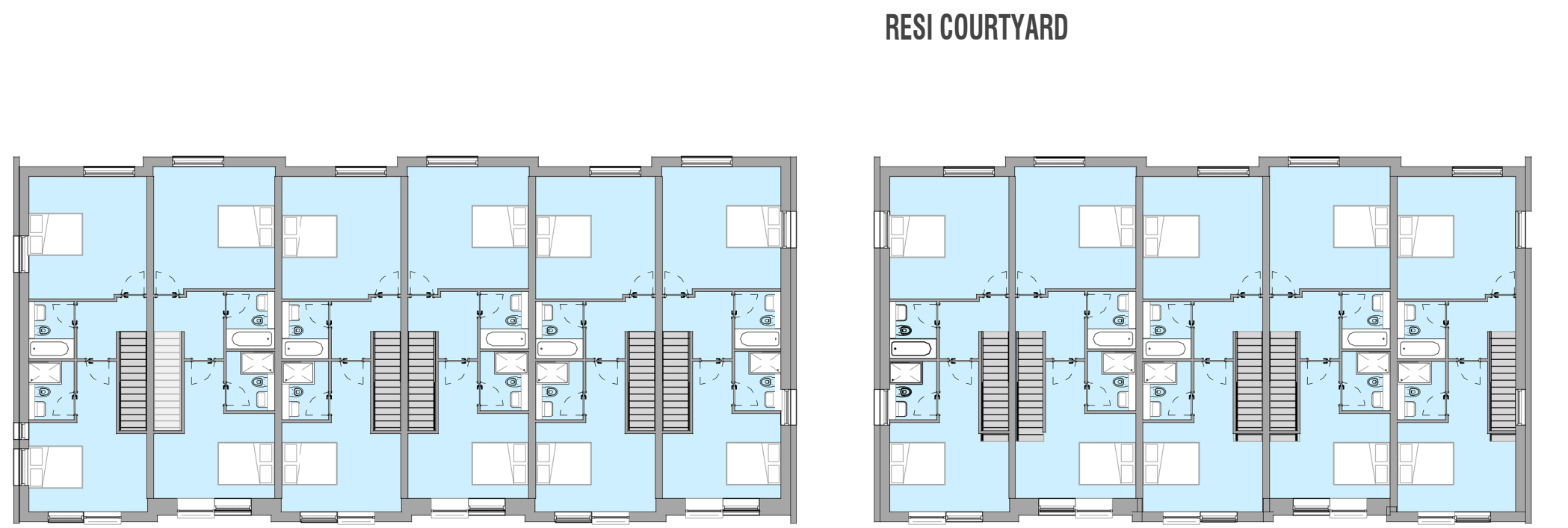
**Project Status**  
**PLANNING**



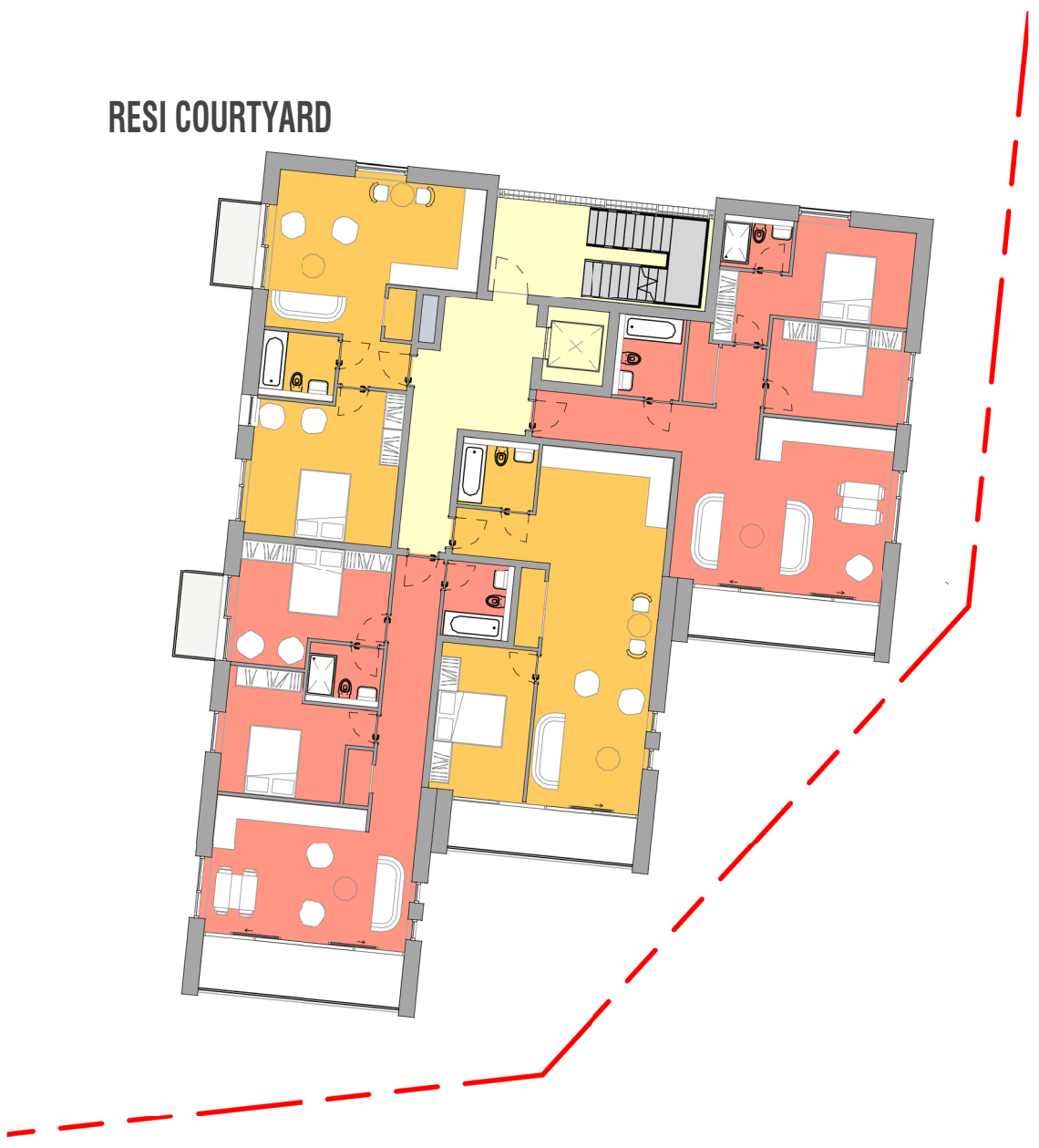
**Block H1 - Level 01**  
1 : 200



**Block H2 - Level 01**  
1 : 200



**Block H1 - Level 02**  
1 : 200



**Block H2 - Typical Level 02-06**  
1 : 200

